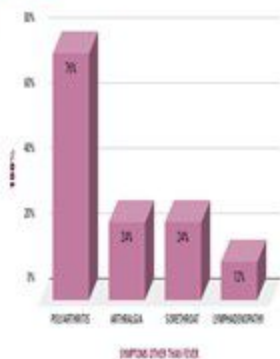


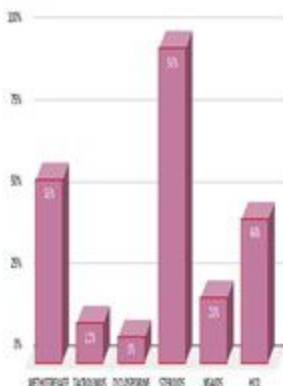
## Adult-onset Still's disease

(AOSD) is a polygenic auto-inflammatory disorder which poses diagnostic challenge mimicking many inflammatory disorders and infections without definitive diagnostic tests. Clinical diagnosis is made based on features that include fever, rash, and arthritis or arthralgia supported by certain laboratory parameters and after excluding infection and malignancy. It could be complicated by macrophage activation syndrome.

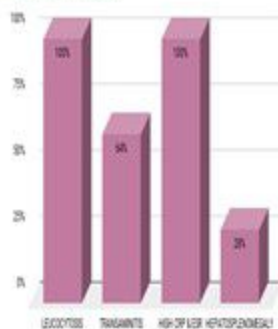
### SYMPTOMS



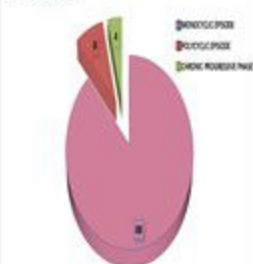
### DRUGS USED



### LABORATORY FINDINGS



### COURSE OF DISEASE



### Conclusion :

- This cohort revealed a predominant male involvement with a monocyclic course.
- 24 % had macrophage activation syndrome as complication.
- Combination therapy was necessary, with 40% of patients receiving steroids alongside other drugs for remission.

### Take Home Message

- AOSD should be considered as a potential differential diagnosis in cases of pyrexia of unknown origin (PUO)
- Steroid Sparing agents to be considered early

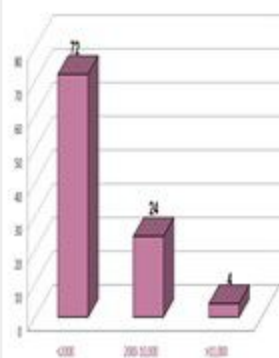
### AGE



### GENDER



### FERRITIN VALUES IN PERCENTAGE



**MACROPHAGE ACTIVATION SYNDROME NOTED IN 24% OF THE TOTAL SAMPLE SIZE**